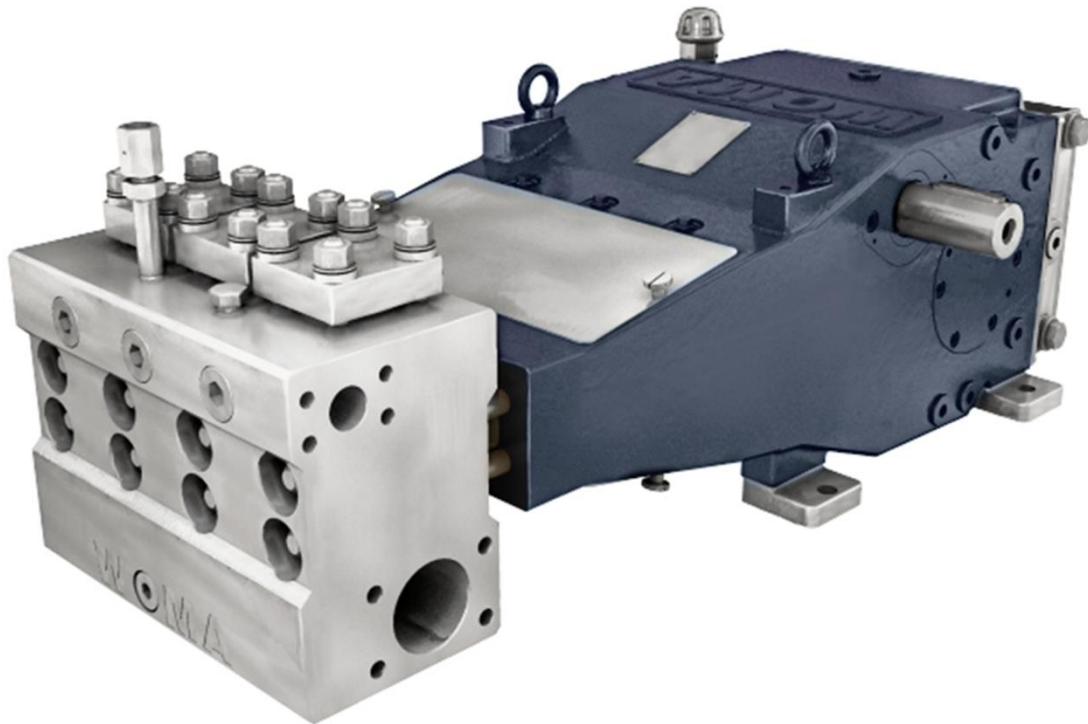


# High-pressure pump 150ARP

The type 150ARP high-pressure pump provides a max. operating pressure of 320 bar and a max. flow rate of 402 l/min.



The ARP-series has operating pressures up to 400 bar and nominal flow rates up to approx. 1,680 l/min.

A special feature of this series is the high reliability also in the conveying of media contaminated with granular or fibrous solids up to a solids concentration of 3,000 mg/l and a grain size of up to 300 µm. This series is particularly suitable for sewer and pipe cleaning as well as descaling in the steel industry. The pump head of the ARP series up to gear size 250 can be ordered as a favourable cast variant or as a robust NIRO variant (see figure). On request, the use of super duplex steels can also be tested for maximum resistance (deviation of the technical data, if applicable).

On request, the availability of an ATEX version can be checked.

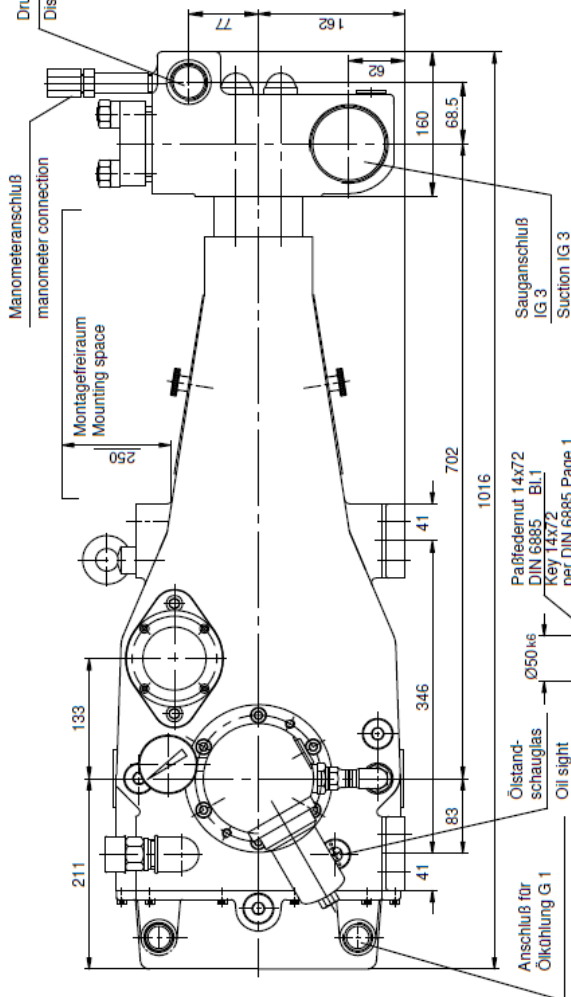
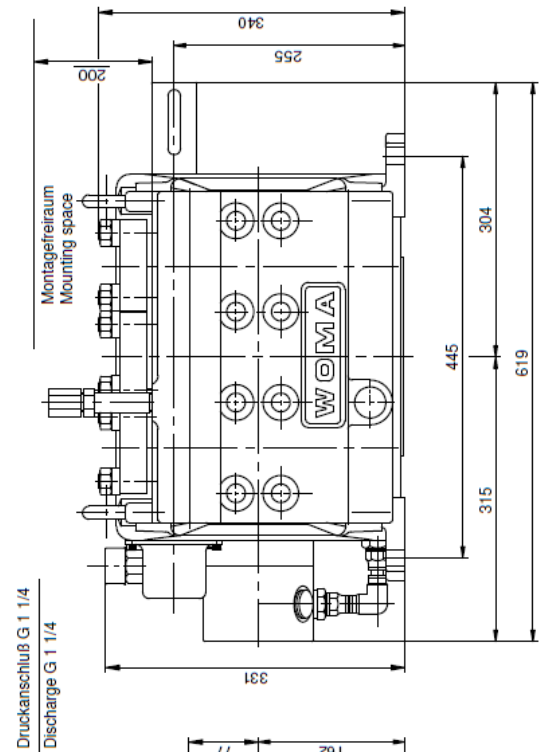
Technical data		
Weight	approx.	325 kg GGG pump head 390 kg NIRO pump head
Inlet pressure connection GGG pump head		IG 3"
Inlet pressure connection NIRO pump head		3,000 psi SAE 3" hole pattern M16; 106.4x61.9
Pressure connection GGG pump head		IG 1 1/4"
Pressure connection NIRO pump head		6,000 psi SAE 1 1/4" hole pattern M14; 66.7x31.8
Cooling water connection		IG 1"
Crankshaft	max. min.	507 rpm Depends on operation parameters
Drive shaft		Diameter 50mm k6, feather key DIN 6885 Sheet 1, A14 x 9 x 72
Torque at drive shaft	max.	676 Nm
Moment of inertia J	i = 2.96 i = 3.69 i = 4.57	0.042 kgm <sup>2</sup> 0.030 kgm <sup>2</sup> 0.022 kgm <sup>2</sup>
Centrifugal moment GD <sup>2</sup>	i = 2.96 i = 3.69 i = 4.57	1.66 Nm <sup>2</sup> 1.17 Nm <sup>2</sup> 0.86 Nm <sup>2</sup>
Inlet pressure	min. max.	1.5 bar 5.0 bar
Pressure amplitude	max.	± 2.0 bar
Flow temperature	min. max.	+5 °C +45 °C (higher temperatures on request)
Flow inlet requirement	min.	1.5x nominal feed rate of the pump, dependent on the conversion set
Emission sound pressure level according to DIN EN ISO 11200		>80 dB(A)
Oil capacity of transmission end	approx.	9 l
Oil viscosity ISO VG under DIN 51517-2 or -3		320 mm <sup>2</sup> /s
Oil pressure lubrication		2.5 - 5.0 bar (optional / performance related)
Oil pressure set value overflow valve		5.0 bar (optional / performance related)
Oil filter fineness		0.025 mm (optional / performance related)
Oil temperature	max. Set value	80 °C 60 - 70 °C
Heat exchanger cooling water requirement	approx.	5 - 10 l/min
Heat exchanger cooling water temperature	min. max.	+5 °C +45 °C
Heat exchanger cooling water pressure	min. max.	1.5 bar 10 bar

Performance variants**														
Pinion shaft		Crank shaft	P40		P45		P50		P55		P60		P65	
1.500 [rpm]	1.800 [rpm]		320 bar*		250 bar		200 bar		170 bar		140 bar		120 bar	
Gear ratio		[rpm]	[kW]	[l/min]	[kW]	[l/min]	[kW]	[l/min]	[kW]	[l/min]	[kW]	[l/min]	[kW]	[l/min]
2.96		507*	105	175	104	224	103	277	107*	337	105	402	105	473*
	3.69	488	101	169	100	215	100	267	103	324	101	387	101	455
3.69		407	84	140	84	179	83	222	86	270	84	323	84	379
	4.57	394	81	136	81	174	80	216	83	262	82	312	81	368
4.57		328	68	113	68	145	67	180	69	218	68	260	68	306

\* Maximum values of the pump

\*\* Technical changes reserved

## Overview pump 150ARP GGG

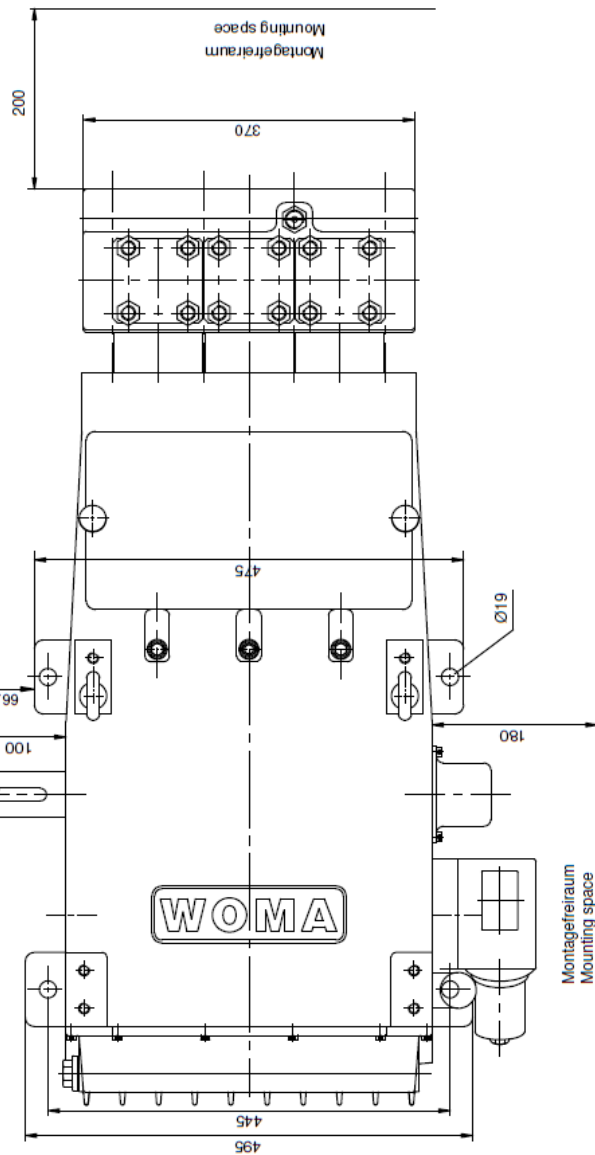


Öfüllung : ca. 9l  
oil capacity : app. 9l

Gewicht : ca. 325 kg netto  
weight : app. 325 kg net

Hub : 95 mm  
stroke : 95 mm

Alle Maße in mm  
all dimensions in mm



# Overview pump 150ARP NIRO

